

# TEFLON\* TEST POINT JACKS

**1128-XX-XXXX**

BASIC PART NO. FINISH COLOR (SEE COLOR CHART)

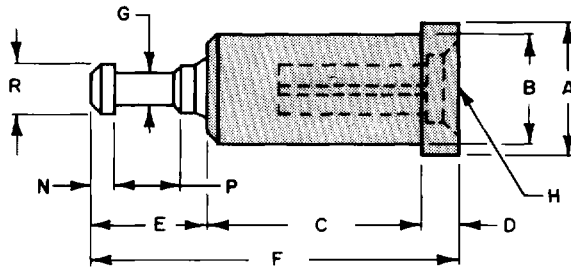


FIG. 1

## TEFLON COLOR CHART

XX	COLOR
10	BLACK
11	BROWN
12	RED
13	ORANGE
14	YELLOW
15	GREEN
16	BLUE
17	VIOLET
18	GRAY
* 19	WHITE

\* STANDARD

PART NO.	FIG	PROBE DIA										PROBE LENGTH	
		A	B	C	D	E	F#	G	H*	N	P	R	T
1128-01	1	.150	.120	.113	.030	.060	.203	.046	.040	.010	.040	.080	.078
02	1	.142	.120	.244	.046	.120	.410	.040	.040	.023	.071	.060	.205
03	1	.142	.120	.283	.046	.120	.449	.040	.040	.023	.071	.060	.245
04	1	.172	.140	.179	.046	.120	.345	.040	.040	.023	.071	.060	.140
05	1	.172	.140	.143	.050	.060	.253	.046	.040	.010	.040	.080	.125
06	1	.172	.148	.094	.046	.050	.190	.046	.040	.010	.030	.080	.078
07	1	.172	.148	.097	.046	.060	.203	.046	.040	.010	.040	.080	.078
08	1	.172	.148	.179	.046	.120	.345	.040	.040	.023	.071	.060	.140
09	1	.218	.170	.269	.046	.060	.375	.046	.090	.010	.040	.078	.250
11	1	.218	.185	.300	.050	.105	.455	.080	.080	.020	.065	.125	.315
12	1	.218	.185	.174	.046	.120	.340	.054	.090	.026	.057	.074	.140
13	1	.218	.185	.271	.046	.120	.437	.054	.080	.037	.046	.074	.195
15	1	.218	.185	.271	.046	.120	.437	.054	.090	.037	.046	.074	.195
16	1	.218	.185	.301	.046	.120	.467	.054	.080	.035	.047	.074	.225
17	1	.218	.185	.287	.046	.120	.453	.054	.050	.037	.048	.074	.195
18	1	.218	.185	.400	.050	.187	.640	.054	.080	.037	.111	.074	.280
19	1	.375	.200	.417	.230	.187	.834	.054	.093	.035	.114	.074	.518
20	1	.218	.200	.387	.187	.187	.761	.054	.093	.035	.116	.074	.455
28	1	.218	.200	.387	.125	.187	.699	.054	.093	.035	.116	.074	.390
29	1	.250	.218	.294	.046	.060	.400	.066	.105	.010	.040	.098	.250
30	1	.250	.204	.271	.046	.120	.437	.054	.080	.035	.046	.074	.195
31	1	.218	.185	.271	.046	.187	.504	.054	.080	.037		.074	.187
32	1	.172	.148	.285	.065	.120*	.470	.040	.040		.070	.060	.225

TERMINAL JACK: (BERYLLIUM COPPER CONTACTS) GOLD PLATED

BUSHING: TEFLON

\* = ±.001

# = REFERENCE DIMENSION

\*Teflon® is Du Pont's registered trademark.

**CONCORD** ELECTRONICS CORPORATION

30 GREAT JONES STREET, NEW YORK, N.Y. 10012  
(212) 777-6571 • 1-800-847-4162 • FAX (212) 995-0161

# TEFLON\* TEST POINT JACKS

## 1128-XX-XX XX

BASIC PART NO. FINISH COLOR (SEE COLOR CHART)

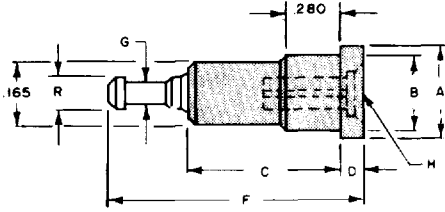


FIG. 2

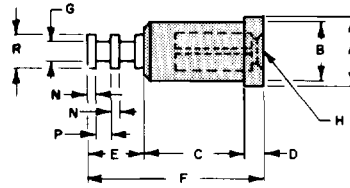


FIG. 3

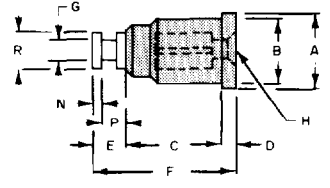


FIG. 4

TEFLON COLOR CHART

- XX COLOR
- 10 BLACK
- 11 BROWN
- 12 RED
- 13 ORANGE
- 14 YELLOW
- 15 GREEN
- 16 BLUE
- 17 PURPLE
- 18 GRAY
- \* 19 WHITE

\* STANDARD

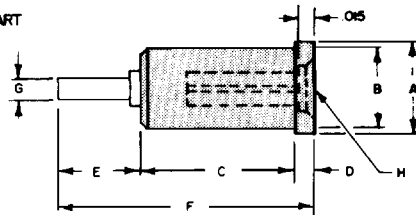


FIG. 5

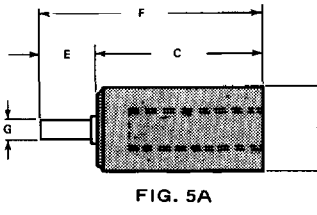


FIG. 5A

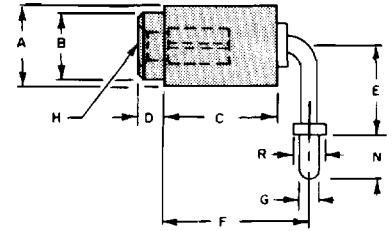


FIG. 6

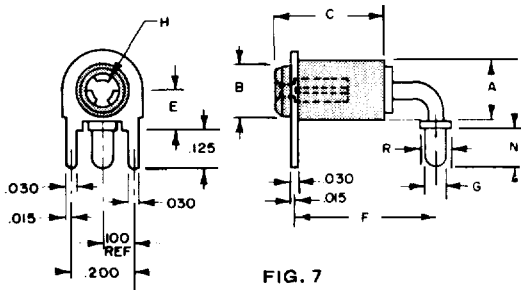


FIG. 7

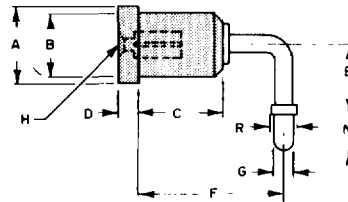


FIG. 8

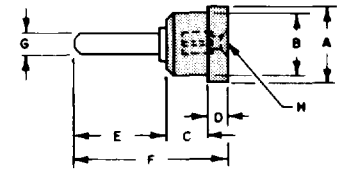


FIG. 9

PART NO.	FIG	PROBE DIA										PROBE LENGTH	
		A	B	C	D	E	F†	G	H*	N	P	R	T
1128-33	2	.218	.185	.700	.046		.896	.054	.050				.300
34	3	.172	.148	.204	.046	.175	.425	.040	.032	.020	.060	.080	.200
35	4	.218	.184	.284	.046	.105	.435	.080	.080	.020	.065	.125	.310
36	5	.172	.148	.175	.046	.187	.408	.060	.040				.135
37	4	.172	.148	.424	.046	.187	.657	.062	.040	.015	.161	.093	.400
50	6	.219	.185	.316	.062	.233	.385	.050	.080	.125		.080	.250
51	7	.218	.187	.689		.140	.500	.050	.080	.125		.080	.500
52	7	.218	.187	.378		.140	.400	.050	.080	.125		.080	.250
53	7	.218	.187	.378		.140	.400	.035	.080	.187		.080	.250
54	7	.218	.187	.378		.140	.500	.050	.080	.125		.080	.250
55	7	.218	.187	.398		.140	.520	.040	.080	.130		.080	.270
56	8	.250	.218	.316	.062	.250	.500	.050	.080	.125		.080	.250
57	8	.250	.218	.316	.062	.250	.400	.050	.080	.125		.080	.250
58	5A	.218		.430		.150	.580	.050	.080				.200
59	5A	.218		.500		.150	.650	.050	.080				.280
65	9	.172	.148	.204	.046	.150	.400	.040*	.033				.200
66	9	.250	.218	.318	.060	.176	.554	.040	.080				.250

† = REFERENCE DIMENSION

\* = ±.001

TERMINAL JACK: (BERYLLIUM COPPER CONTACTS) GOLD PLATED

BUSHING: TEFLON

\*Teflon® is Du Pont's registered trademark.

**CONCORD**® ELECTRONICS CORPORATION

30 GREAT JONES STREET, NEW YORK, N.Y. 10012  
(212) 777-8571 • 1-800-847-4162 • FAX (212) 995-0161